

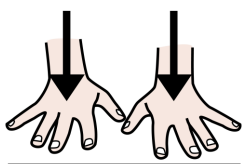
I FIUMI



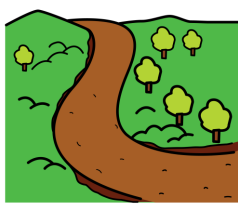
I FIUMI



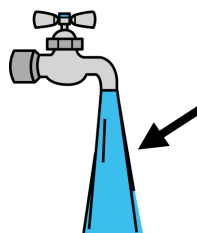
SONO



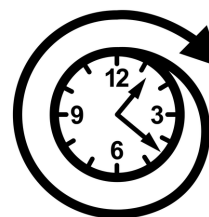
CORSI



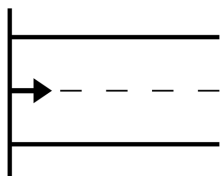
D'ACQUA



PERENNI



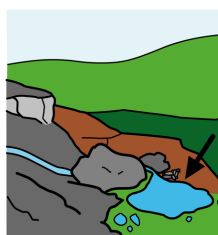
HANNO ORIGINE



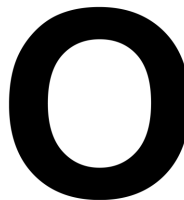
DA



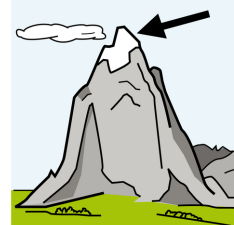
UNA SORGENTE



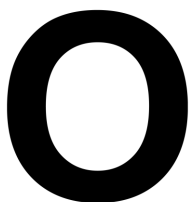
O



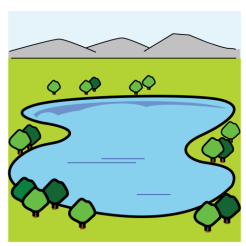
UN GHIACCIAIO



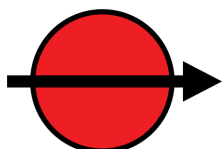
O



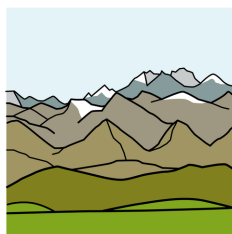
UN LAGO



ATTRAVERSANO



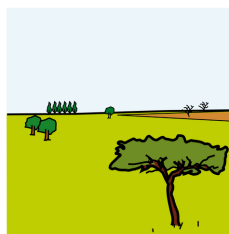
MONTAGNE



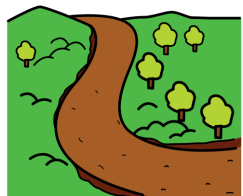
COLLINE



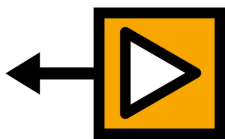
E PIANURE



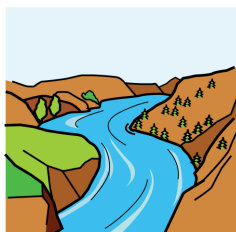
IL CORSO



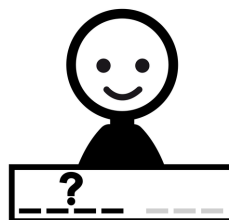
DEL



FIUME



SI CHIAMA



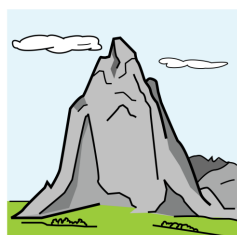
LETTO



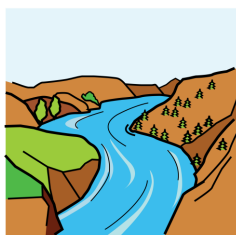
IN



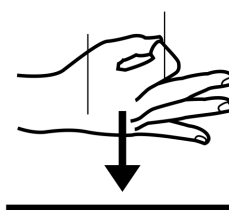
MONTAGNA



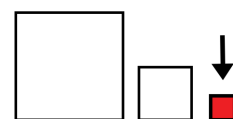
IL FIUME



E'



PICCOLO



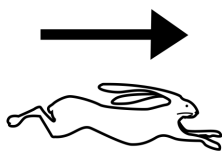
E



SCORRE



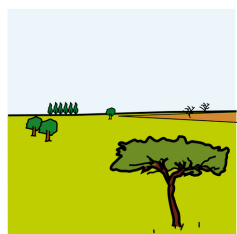
VELOCE



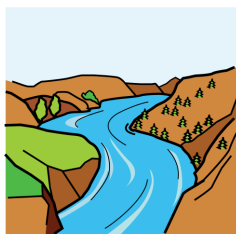
IN



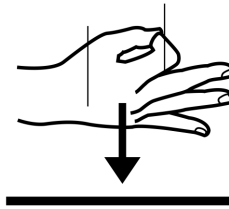
PIANURA



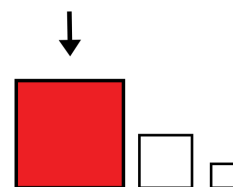
IL FIUME



E'



GRANDE



E



SCORRE



LENTO

